

November 10, 2014

The Listing Manager  
Australian Securities Exchange  
Level 4  
20 Bridge Street  
SYDNEY NSW 2000



ABN 11 009 341 539

G1 49 Melville Parade  
South Perth WA 6151  
Australia

PO Box 307  
West Perth WA 6872  
Australia

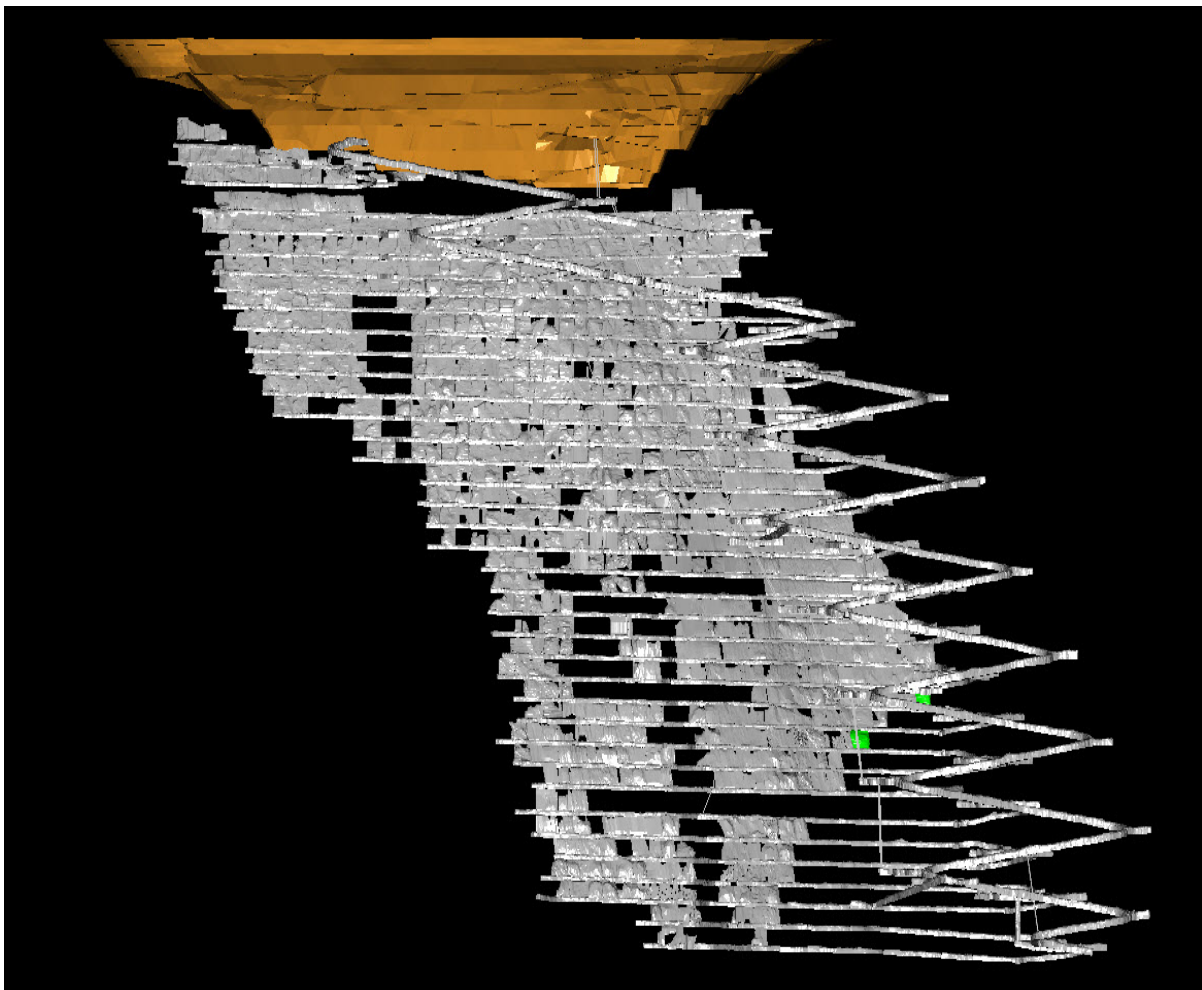
T 61 8 9474 2113  
F 61 8 9367 9386  
E [tribune@tribune.com.au](mailto:tribune@tribune.com.au)  
W [tribune.com.au](http://tribune.com.au)

### Monthly Production Report for October 2014

The production rate at Raleigh will increase as the new stoping front is established.

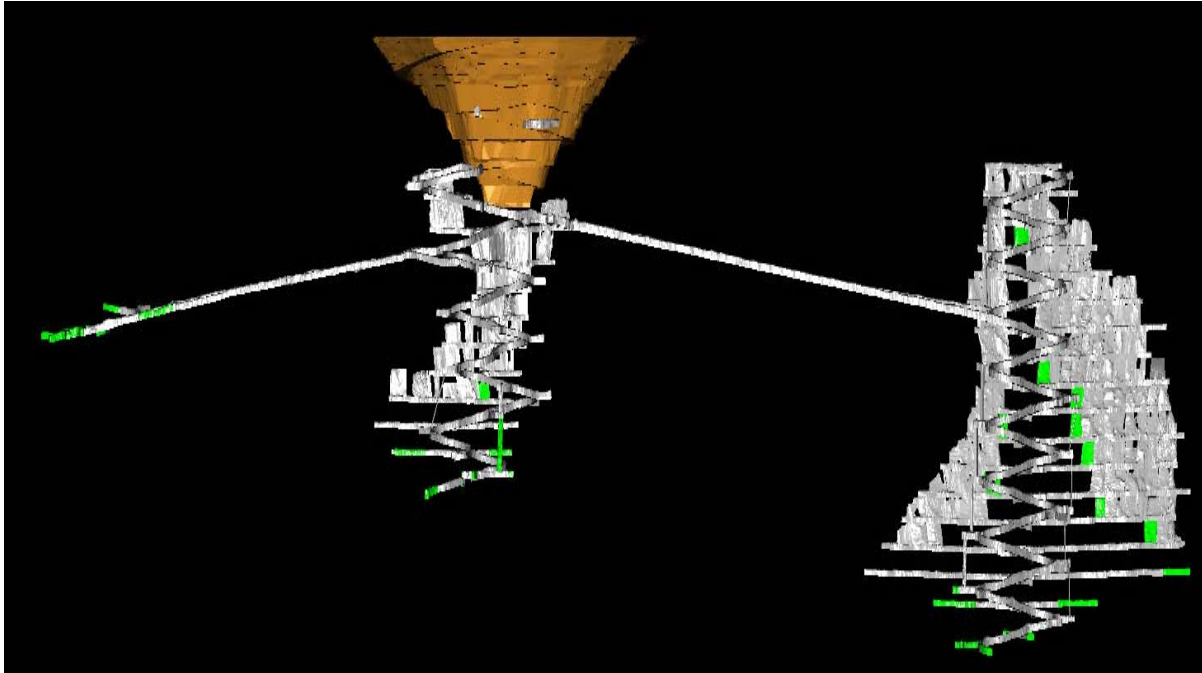
Again, the production schedule at Rubicon and Hornet has been re-optimized, using some of the resources from Raleigh, to minimize the production shortfall at Raleigh due to the February earthquake.

### End of Month Status                      Raleigh – Production



green indicates new developments

### Rubicon – Development and Production



green indicates new developments

### Pegasus – Development



The development at Pegasus has intersected K2 ore in the 6127 drive

<b>MINE PRODUCTION</b>			
		<b>Raleigh U/G</b>	<b>Rubicon U/G</b>
<b>Ore</b>	t	<b>5,649</b>	<b>48,534</b>
<b>Grade</b>	g/t Au	<b>12.0</b>	<b>12.5</b>
<b>Gold</b>	oz	<b>2,187</b>	<b>19,650</b>
<b>Tribune's Entitlement</b>	%	<b>37.50</b>	<b>36.75</b>

<b>MINE OPERATING COSTS</b>			
<b>Total Cost \$M</b>	<b>Raleigh</b>	<b>Unit Cost</b>	<b>Rubicon</b>
<b>October 14 *</b>	<b>1.328</b>	<b>\$/t ore</b>	<b>95</b>
September 14 *	1.099	\$/oz gold	235

\* includes rehabilitation costs

<b>MINE DEVELOPMENT</b>				
			<b>Raleigh</b>	<b>Rubicon</b>
<b>Capital</b>	<b>Decline</b>	m	<b>0.0</b>	<b>124.1</b>
	<b>Secondary</b>	m	<b>0.0</b>	<b>368.3</b>
<b>Operating</b>	<b>Waste</b>	m	<b>0.0</b>	<b>20.2</b>
	<b>Ore</b>	m	<b>0.0</b>	<b>262.6</b>
	<b>Past Fill</b>	m	<b>0.0</b>	<b>48.0</b>

<b>End of month position</b>		<b>RL (m)</b>	<b>below surface (m)</b>
<b>Raleigh Decline</b>	bottom	<b>5618</b>	<b>727</b>
<b>Rubicon Decline</b>	bottom	<b>6005</b>	<b>338</b>
<b>Hornet Incline</b>	top	<b>6244</b>	<b>99</b>
<b>Hornet Decline</b>	bottom	<b>5889</b>	<b>454</b>
<b>Pegasus Access</b>	bottom	<b>6119</b>	<b>224</b>

<b>End of month EKJV STOCKPILES</b>			
<b>ROM pad</b>	<b>Ore Source</b>	<b>Ore</b>	<b>Grade</b>
		t	g/t Au
<b>Raleigh</b>	Raleigh	<b>5,467</b>	<b>12.4</b>
<b>Rubicon</b>	Rubicon	<b>22,548</b>	<b>13.2</b>
<b>Kanowna Belle</b>	Rubicon	<b>21,934</b>	<b>13.3</b>

#### **Toll Processing**

During the month, 3,006 tonnes (wet) of Raleigh ore and 48,194 tonnes (wet) of Rubicon ore were hauled to the Kanowna Belle Plant and 44,941 tonnes of EKJV ore was processed.

<b>Bullion accredited to RAND and TRIBUNE Accounts from Kanowna Belle</b>			
<b>Month</b>	<b>Gold (oz)</b>	<b>Silver (oz)</b>	<b>Tribune's share gold</b>
<b>October 14</b>	<b>8,266.176</b>	<b>2,034.682</b>	<b>6,199.633</b>
September 14	9,350.603	2,193.971	7,012.953