

July 10, 2014

The Listing Manager  
 Australian Securities Exchange  
 Level 4  
 20 Bridge Street  
 SYDNEY NSW 2000

ABN 11 009 341 539

G1 49 Melville Parade  
 South Perth WA 6151  
 Australia

PO Box 307  
 West Perth WA 6872  
 Australia

T 61 8 9474 2113  
 F 61 8 9367 9386  
 E [tribune@tribune.com.au](mailto:tribune@tribune.com.au)  
 W [tribune.com.au](http://tribune.com.au)

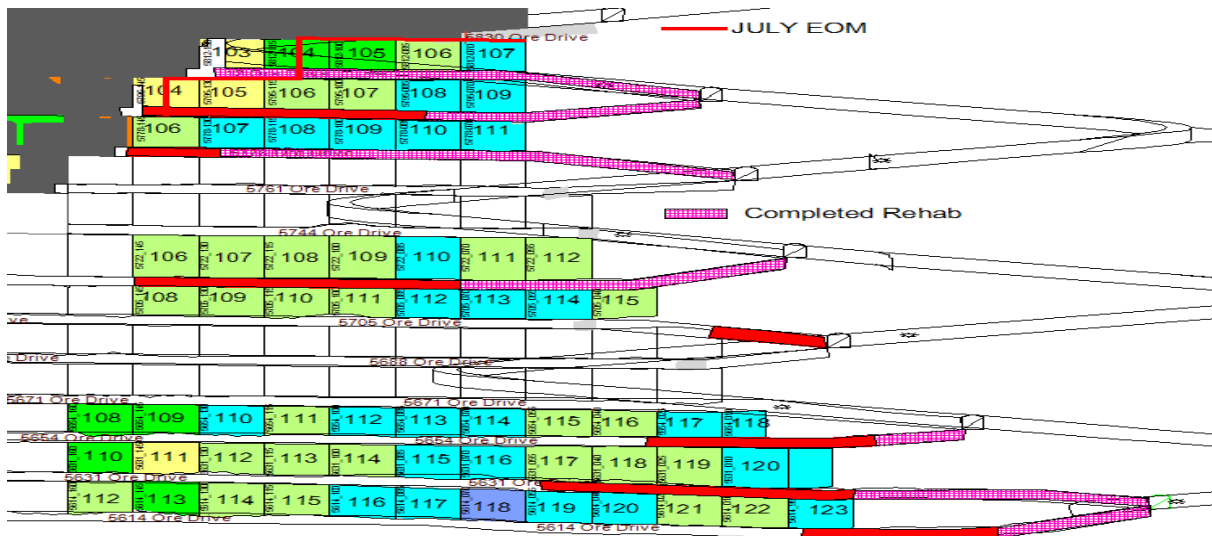
**Monthly Production Report for June 2014**

The first production blast at Raleigh since the February earthquake was fired in late June. Rehabilitation is proceeding.

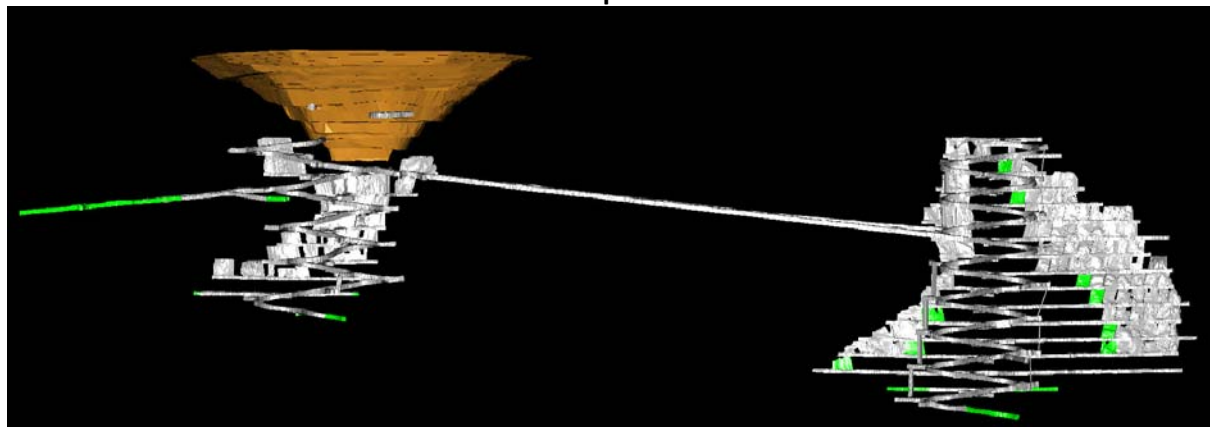
The production schedule at Rubicon and Hornet was re-optimized, using some of the resources from Raleigh, to minimize the production shortfall at Raleigh due to the February earthquake.

**End of Month Status**

**Raleigh – Rehabilitation**



**Rubicon – Development and Production**



green indicates new developments

<b>MINE PRODUCTION</b>			
		<b>Raleigh U/G</b>	<b>Rubicon U/G</b>
<b>Ore</b>	t	<b>0</b>	<b>27,622</b>
<b>Grade</b>	g/t Au	<b>0.00</b>	<b>14.50</b>
<b>Gold</b>	oz	<b>0</b>	<b>12,876</b>
<b>Tribune's Entitlement</b>	%	<b>37.50</b>	<b>36.75</b>

<b>MINE OPERATING COSTS</b>			
<b>Unit Cost</b>		<b>Raleigh</b>	<b>Rubicon</b>
<b>\$/t ore</b>		<b>0</b>	<b>150</b>
<b>\$/oz gold</b>		<b>0</b>	<b>321</b>

<b>MINE DEVELOPMENT</b>				
			<b>Raleigh</b>	<b>Rubicon</b>
<b>Capital</b>	<b>Decline</b>	m	<b>0.0</b>	<b>236.6</b>
	<b>Secondary</b>	m	<b>0.0</b>	<b>202.9</b>
<b>Operating</b>	<b>Waste</b>	m	<b>0.0</b>	<b>0.0</b>
	<b>Ore</b>	m	<b>0.0</b>	<b>109.3</b>
	<b>Past Fill</b>	m	<b>0.0</b>	<b>75.0</b>

<b>End of month position</b>		<b>RL (m)</b>	<b>below surface (m)</b>
<b>Raleigh Decline</b>	bottom	<b>5618</b>	<b>727</b>
<b>Rubicon Decline</b>	bottom	<b>6029</b>	<b>314</b>
<b>Hornet Incline</b>	top	<b>6244</b>	<b>99</b>
<b>Hornet Decline</b>	bottom	<b>5915</b>	<b>428</b>
<b>Pegasus Access</b>	bottom	<b>6154</b>	<b>189</b>

<b>End of month EKJV STOCKPILES</b>			
<b>ROM pad</b>	<b>Ore Source</b>	<b>Ore</b>	<b>Grade</b>
		t	g/t Au
<b>Raleigh</b>	Raleigh	<b>140</b>	<b>8.7</b>
<b>Rubicon</b>	Rubicon	<b>14,700</b>	<b>13.6</b>
<b>Kanowna Belle</b>	Rubicon	<b>7,600</b>	<b>15.6</b>

#### **Toll Processing**

During the month, 35,296 tonnes (wet) of Rubicon ore were hauled to the Kanowna Belle Plant and 49,498 tonnes of EKJV ore were processed.

<b>Bullion accredited to RAND and TRIBUNE Accounts from Kanowna Belle</b>			
<b>Month</b>	<b>Gold (oz)</b>	<b>Silver (oz)</b>	<b>Tribune's share gold</b>
<b>June 14</b>	<b>8,984.759</b>	<b>2,255.260</b>	<b>6,738.569</b>
May 14	8,338.166	1,993.796	6,253.625