

June 10, 2014

The Listing Manager
 Australian Securities Exchange
 Level 4
 20 Bridge Street
 SYDNEY NSW 2000

ABN 11 009 341 539

G1 49 Melville Parade
 South Perth WA 6151
 Australia

PO Box 307
 West Perth WA 6872
 Australia

T 61 8 9474 2113
 F 61 8 9367 9386
 E tribune@tribune.com.au
 W tribune.com.au

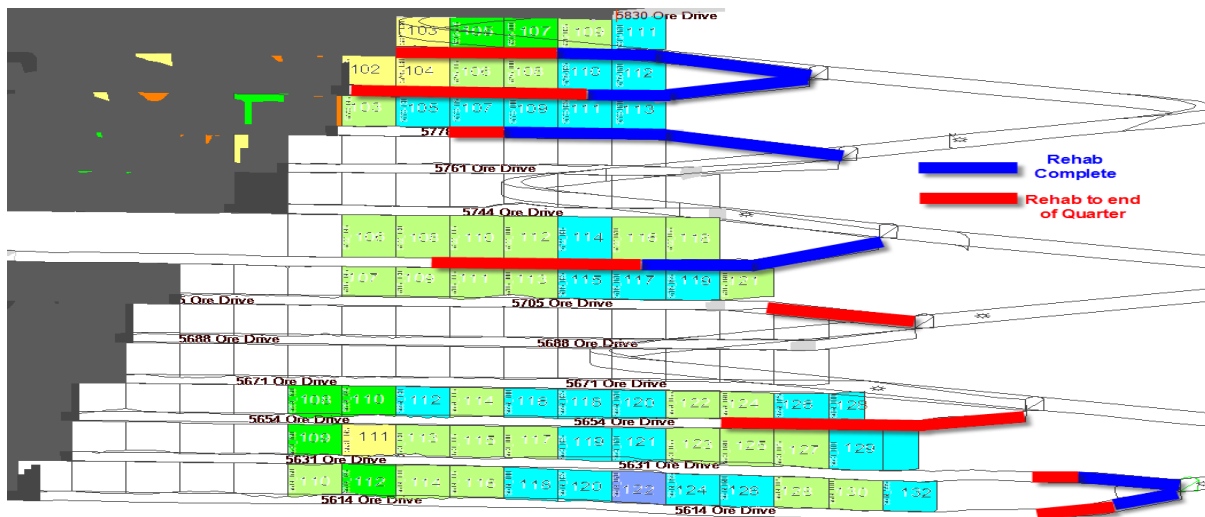
Monthly Production Report for May 2014

The production schedule at Rubicon and Hornet was re-optimized, using some of the resources from Raleigh, to minimize the production shortfall at Raleigh due to the February earthquake.

Rehabilitation at Raleigh is proceeding and production is now expected to recommence before the end of June.

End of Month Status

Raleigh – Rehabilitation



Rubicon – Development and Production



(green indicates new developments)

MINE PRODUCTION			
		Raleigh U/G	Rubicon U/G
Ore	t	139	40,315
Grade	g/t Au	8.73	11.57
Gold	oz	39	14,990
Tribune's Entitlement	%	37.50	36.75

MINE OPERATING COSTS			
Unit Cost		Raleigh	Rubicon
\$/t ore		0	88
\$/oz gold		0	236

MINE DEVELOPMENT				
			Raleigh	Rubicon
Capital	Decline	m	0.0	226.8
	Secondary	m	0.0	145.7
Operating	Waste	m	0.0	0.0
	Ore	m	0.0	118.9
	Past Fill	m	0.0	75.0

End of month position		RL (m)	below surface (m)
Raleigh Decline	bottom	5618	727
Rubicon Decline	bottom	6032	311
Hornet Incline	top	6244	99
Hornet Decline	bottom	5926	417
Pegasus Access	bottom	6166	177

End of month EKJV STOCKPILES			
ROM pad	Ore Source	Ore	Grade
		t	g/t Au
Raleigh	Raleigh	140	8.7
Rubicon	Rubicon	19,600	14.1
Kanowna Belle	Rubicon	22,200	13.6

Toll Processing

During the month, 45,442 tonnes (wet) of Rubicon ore were hauled to the Kanowna Belle Plant and 38,380 tonnes of EKJV ore were processed.

Bullion accredited to RAND and TRIBUNE Accounts from Kanowna Belle			
Month	Gold (oz)	Silver (oz)	Tribune's share gold
May 14	8,338.166	1,993.796	6,253.625
April 14	6,699.230	1,499.492	5,024.423