



5 August 2013

The Manager  
Company Announcements Office  
ASX Limited  
Exchange Centre  
20 Bridge Street  
SYDNEY NSW 2000

ABN 11 009 341 539

G1 49 Melville Parade  
South Perth WA 6151  
Australia

PO Box 307  
West Perth WA 6872  
Australia

T 61 8 9474 2113  
F 61 8 9367 9386  
E [tribune@tribune.com.au](mailto:tribune@tribune.com.au)  
W [tribune.com.au](http://tribune.com.au)

Dear Sir/Madam

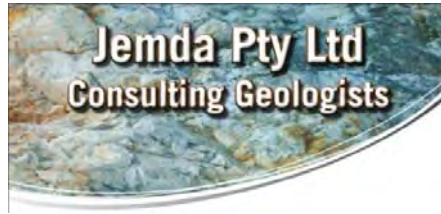
**EKJV JUNE 2013 QUARTERLY EXPLORATION REPORT**

Tribune Resources Limited (ASX code: TBR) had pleasure in providing the EKJV Quarterly Exploration Report for the June 2013 quarter.

Yours faithfully  
**Tribune Resources Limited**

A handwritten signature in black ink, appearing to read 'Peter Webse', is positioned above the printed name.

**Peter Webse**  
Company Secretary



ACN 139 342 859

5<sup>th</sup> August 2013

Mr Anton Billis,

Director,

Tribune Resources Ltd

PO Box 307

West Perth 6872

Dear Anton,

**RE: EKJV Exploration Results – June Quarter 2013.**

As you requested I have reviewed the Barrick Report “Quarterly Exploration Report: June 2013 EKJV Quarterly Activity”. The Barrick Report is attached and is suitable for release to the market.

Yours sincerely,

Matthew Sullivan

B.App.Sc, M. Aus.I.M.M

**Competency Statement**

The information in this report in relation to Exploration Results and Mineral Resources is based on information reviewed by Matthew Sullivan who is a Member of the Australasian Institute of Mining and Metallurgy and has sufficient exploration experience which is relevant to the style of mineralisation under consideration to qualify as a Competent Person as defined in the 2004 Edition of the “Australian Code for Reporting Exploration Results, Mineral Resources and Ore Reserves”. Mr. Sullivan is a full time employee of Jemda Pty Ltd, consultants to Tribune Resources and consents to the inclusion of the matters based on this information in the form and context in which it appears.



**BARRICK**

**KANOWNA**

**Quarterly Exploration Report:  
June 2013 EKJV Quarterly Activity**

## **Summary**

This report provides a quarterly report on work conducted by Barrick Kanowna on the East Kundana Joint Venture (EKJV). The EKJV is a joint venture between Barrick Gold subsidiary company Gilt-Edge Mining NL (GEM) and Rand Mining Ltd and Tribune Resources Ltd.

Work was conducted on the Pegasus and Drake prospects within the EKJV on mining lease M16/309.

Drilling at Pegasus between April and June 2013 focused on infill drilling K2 in an area between the 5900RL and 6100RL. This drilling was resource definition drilling designed to convert inferred resources into indicated reserves.

Drilling in late June was designed to test the K2 structure at depth beneath the Drake deposit, searching for extensions to mineralisation along strike in a trend similar to that seen at Frogs Leg.

*Figure 1* shows a collar plan of the second quarter 2013 drilling.

## **Drilling**

A total of 14 diamond drill holes were completed during the quarter for a total advance of 3302.2m

Reverse circulation drilling was utilised on some of the drill holes as pre-collars and a total advance of 1390m of RC was achieved for the quarter

### ***Pegasus***

The majority of drilling in the 2<sup>nd</sup> quarter of 2013 was focused on resource definition drilling. Desktop studies are underway evaluating the Pegasus deposit and infill drilling is required in this area to assist with this evaluation. 11 holes were drilled into the Pegasus project during the quarter. *Figure 2* shows an updated long projection of the K2 mineralisation for the Pegasus project.

Results for this are tabled below (Table 1). Significant intersections are listed:

PGDD13007	2.34m @ 21.2 g/t Au from 487m
PGDD13008	3.6m @ 38.85 g/t Au from 463.1m
PGDD13012	1.67m @ 21.7 g/t Au from 265.28m

### ***Drake***

Towards the end of the June quarter, two holes were drilled near the Drake deposit targeting mineralisation on the K2 structure at depth. The aim for this program is to test for wide, high grade gold mineralisation along K2 similar to that observed at the Frogs Leg mine to the south.



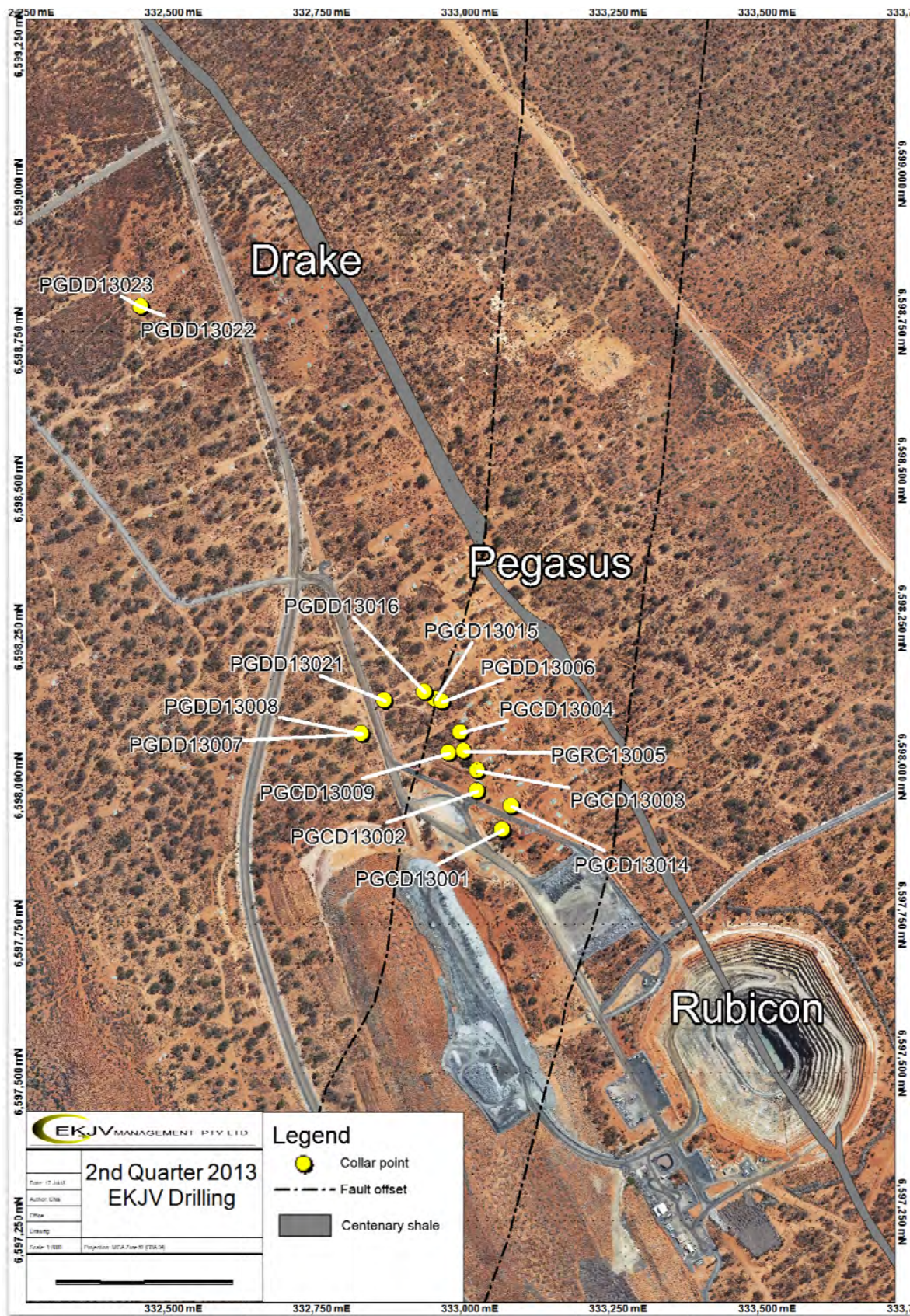


Figure 1 Map of collar positions for 2nd Quarter drilling at Pegasus



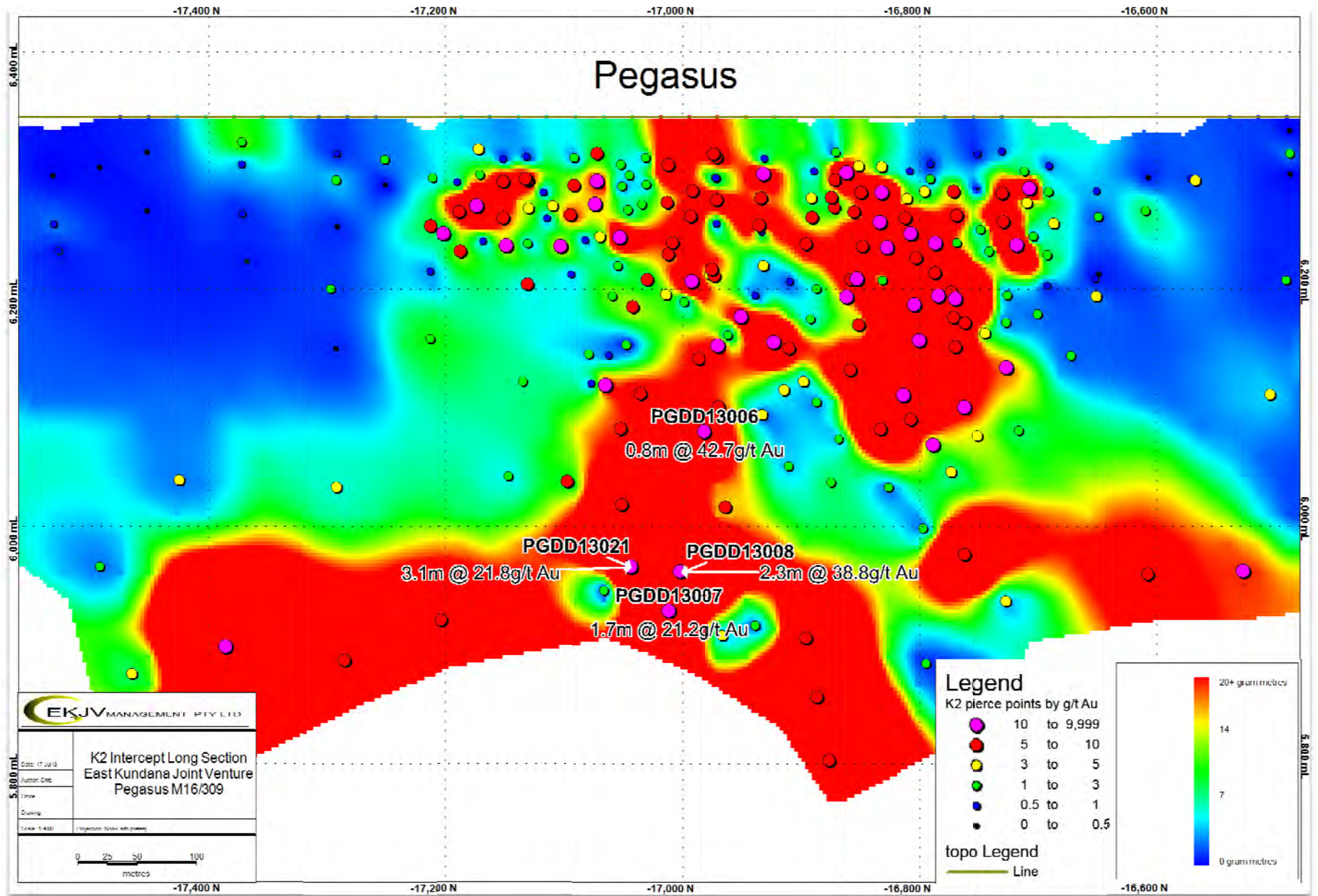


Figure 2 K2 Long projection at Pegasus

Hole ID	GDA				Local				Dip	EOH Depth	From (m)	To (m)	DH Width	Grade (g/t)	Comment
	East	North	RL	Azi	East	North	RL	Azi							
PGDD13001	333044	65979009	344	62	9697	16762	6344	91	-62	384	274.7	275.4	0.7	1.22	K2B
											335.1	335.9	0.8	13.0	K2_HW
											344.3	345.6	1.3	4.10	K2
PGDD13002	333001	6597974	344	65	9692	16840	6344	94	-64	421	253.0	254.1	1.1	5.78	K2B
											347.3	348.8	1.5	2.43	K2
PGDD13003	333002	6598009	344	61	9710	16870	6344	90	-60	326.6	222.2	223	0.8	7.31	K2B
											308.1	311.1	3.0	2.34	K2
PGDD13004	332972	6598073	344	61	9715	16940	6344	90	-60	309	190.7	191.0	0.3	NSI	K2B
											289.9	290.2	0.3	10.0	K2
PGDD13006	332930	6598129	344	65	9705	17010	6344	94	-59	327	172.6	175.0	2.4	9.40	K2B
											300.5	301.9	1.4	42.8	K2
PGDD13007	332802	6598069	344	61	9564	17020	6344	90	-60	509.8	133.0	134.0	1.0	3.55	K2A
											306.1	310.5	4.4	1.56	K2B
											487.0	489.3	2.3	21.2	K2
PGDD13008	332803	6598069	344	61	9565	17020	6344	90	-58	481.6	125.1	130.3	5.2	2.72	K2A
											463.1	466.7	3.6	38.9	K2
PGDD13009	332952	6598038	344	61	9680	16920	6344	90	-62	390	237.3	239.2	1.9	8.03	K2B
											340.6	341.2	0.6	6.31	K2
PGDD13010	332948	6598216	344	40	9763	17077	6344	69	-60	138.0	97.7	99.6	1.9	1.60	K2B
PGDD13011	332938	6598163	344	49	9728	17035	6344	78	-64	168.0	126.2	131.1	4.9	3.60	K2B
PGDD13012	332938	6598163	344	50	9728	17035	6344	79	-57	282.0	126.0	132.0	6.0	17.2	K2B
											265.3	267.0	1.7	21.7	K2
PGDD13013	332884	6598152	344	45	9676	17052	6344	74	-60	366.0	159.0	161.0	2.0	11.7	K2B
											355.1	356.9	1.8	8.50	K2
PGDD13014	333059	6597949	344	61	9730	16790	6344	90	-64	340.8	229.0	231.1	2.1	2.21	K2B
											304.7	306	1.3	15.8	K2
PGDD13016	332911	6598142	344	61	9695	17030	6344	90	-60	221.0	160.9	161.2	0.3	4.24	K2B
PGDD13017	332894	6598132	344	61	9675	17030	6344	90	-60	213.0	132.0	132.9	0.9	1.26	K2B
PGDD13018	332892	6598177	344	61	9695	17070	6344	90	-60	195.0	144.0	147.0	2.3	15.1	K2B
PGDD13019	332886	6598197	344	61	9700	17090	6344	90	-60	177.0	151.0	157.0	6.0	9.84	K2B
PGDD13020	332869	6598187	344	61	9680	17090	6344	90	-60	189.0	167.8	169.0	1.2	10.6	K2B
PGDD13021	332844	6598127	344	61	9630	17050	6344	90	-60	450	30.4	31.5	1.1	9.03	
											173.9	174.8	0.9	12.4	K2A
											224.5	226	1.5	1.02	K2B
											428.0	430.3	2.3	48.9	K2

**Table 1 Final results:**

K2 is the main mineralised surface and spans a carbonaceous shale unit, the Centenary Shale. Where the shale unit is thick and the position of the vein is distinct, K2 has been sub-divided into the K2 vein on the footwall of the Centenary Shale (K2\_CFW), and K2 vein on the hangingwall of the same shale (K2\_CHW). K2B and K2A are sub-parallel structures analogous to K2, but positioned in the hanging wall basalt. K2, K2A and K2B are all part of the same suite of shears that form part of the regional Zuleika Shear Zone.

**Competency Statement**

*The information in this report relating to Exploration Results and Mineral Resources is based on information compiled by Mr Glenn Grayson who is a Member of the Australian Institute of Mining and Metallurgy and has sufficient exploration experience which is relevant to the style of mineralisation under consideration to qualify as a Competent Person as defined in the 2004 Edition of the 'Australasian Code for Reporting of Exploration Results, Mineral Resources and Ore Reserves'. Mr Grayson is a full time employee of Barrick Kanowna and consents to the inclusion in the report of the matters based on his information in the form and context in which it appears (Figures 1 and 2, and Table 1).*